

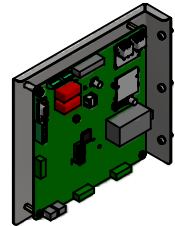
HGP Part Number	HorsePower (HP)	kVar	Harmonic	Voltage (V)	HZ.	Phase
HGP0015DW3----	15	3.8	5th	208	60	3

Note: For Torque Information
See IOM Manual

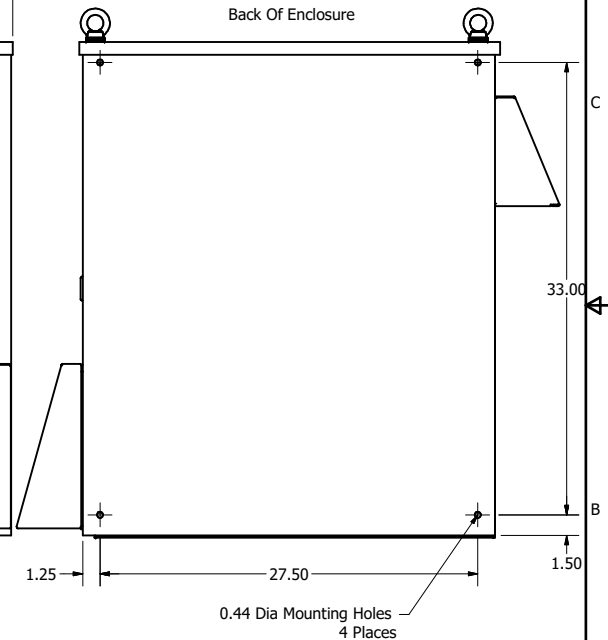
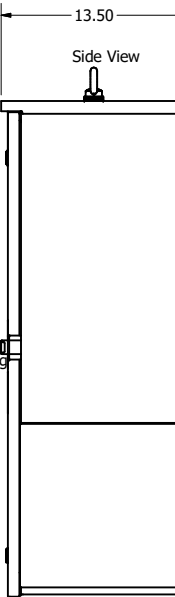
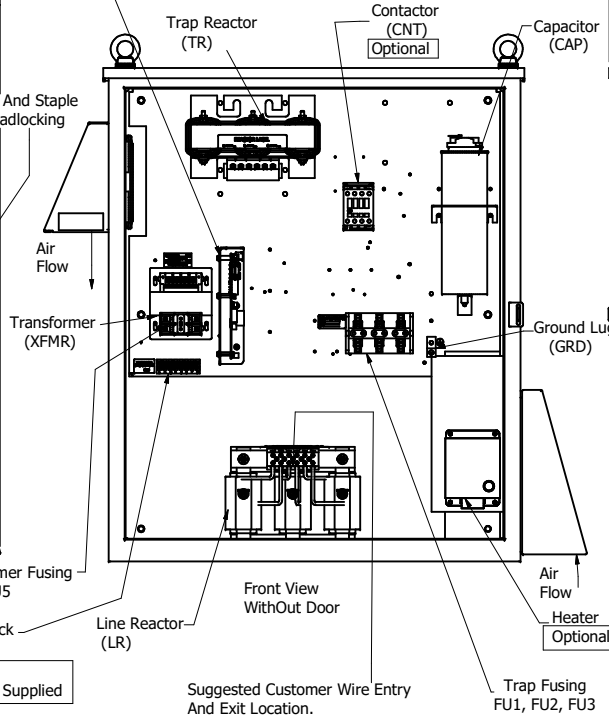
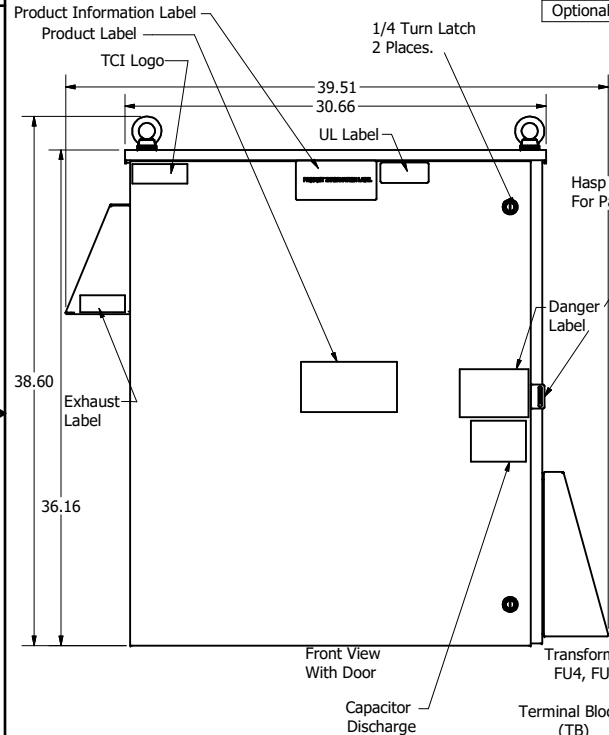
Customer Connections.
L1, T1, L2, T2, L3, T3
Wire Range: 1 AWG to 22 AWG.

Ground Lug
Wire Range: 1/0 to 14 AWG.

HGP Part Number	Schematic Drawing #	Approx Weight (LBS)
HGP0015DW3S0000	28697-208-2S	239
HGP0015DW3C0000	28697-208-2	241
HGP0015DW3C000H	28697-208-2H	245



PQConnect Board
Optional



HGP0015DW3----						
Components	S0000	C0000	C000H	S1000	C1000	C100H
Line Reactor (LR)	x	x	x	X	X	X
Trap Reactor (TR)	x	x	x	X	X	X
Capacitor (Cap)	x	x	x	X	X	X
Trap Fusing, FU1, FU2, FU3	x	x	x	X	X	X
Contactor (CNT)		x	x		X	X
Transformer (XFMR)	x	x	x	X	X	X
XFMR Fusing, FU4, FU5	x	x	x	X	X	X
Heater			x			X
PQConnect Board				X	X	X

NOTE: USE ONLY HUBS OR FITTINGS THAT COMPLY
WITH UL514B FOR TYPE 3R ENCLOSURES

TCI, LLC CLAIMS PROPRIETARY RIGHTS IN THE MATERIAL HEREIN DISCLOSED. IT IS SUPPLIED WITHOUT PREJUDICE TO ANY PATENT RIGHTS OF TCI AND MAY NOT BE REPRODUCED OR USED TO MANUFACTURE ANYTHING SHOWN THEREIN WITHOUT WRITTEN PERMISSION FROM TCI.				TOLERANCES (EXCEPT AS NOTED)			
				DECIMAL			
				.XX ± .25 .XXX ± .10			
				FRACTIONAL			
B	S265, Enclosure Updated	8/06/2020	DSW	± 1/16			
A	As designed	01/3/20	JRN	ANGULAR			
NO	REVISION	DATE	BY	± 1°			

Customer Is Responsible For Installation to
Meet All National And Local Electrical Codes.

Material(s) Shall be RoHS Compliant

TCI W132 N10611 Grant Drive Germantown, WI 53022		HarmonicGuard Passive HGP, 15HP, 208/3/60, Type 3R	
		108416DG	SHT 1 OF 1